

## Photoshop Fun

<http://print24.com/blog/2014/01/the-best-75-photoshop-tutorials-of-2013/>

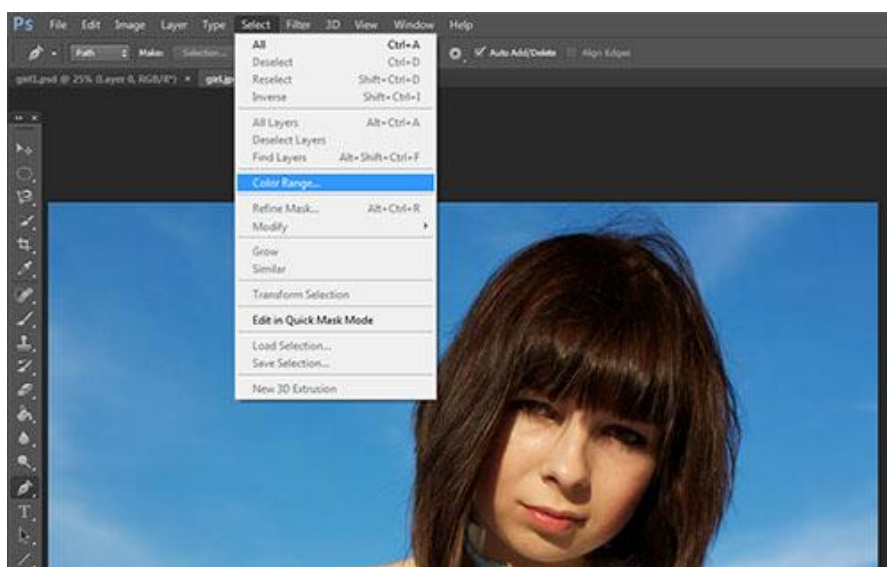
direct link: [http://www.photoshoptutorials.ws/photoshop-tutorials/drawing/create-colorful-retro-poster-photoshop-](http://www.photoshoptutorials.ws/photoshop-tutorials/drawing/create-colorful-retro-poster-photoshop-illustrator/?doing_wp_cron=1427716207.3167889118194580078125)

[illustrator/?doing\\_wp\\_cron=1427716207.3167889118194580078125](http://www.photoshoptutorials.ws/photoshop-tutorials/drawing/create-colorful-retro-poster-photoshop-illustrator/?doing_wp_cron=1427716207.3167889118194580078125)

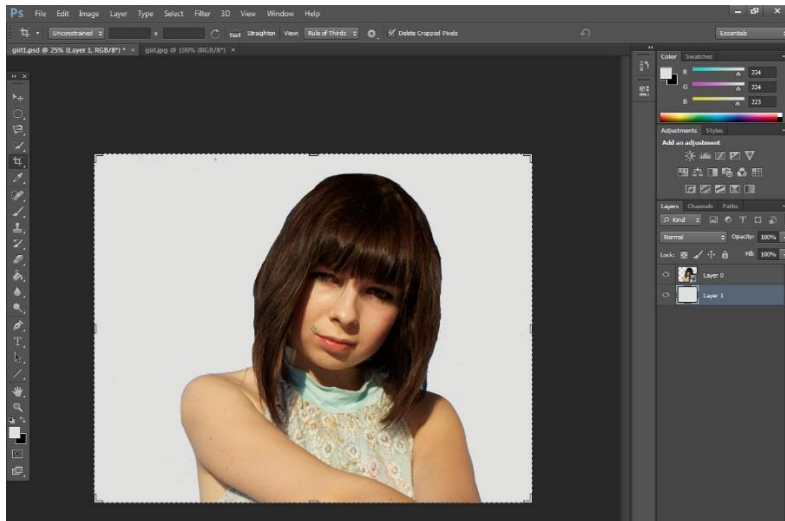
1. Grab a photo which has the face and at least some of the torso.



2. Remove the background. Try using the color range in Menu => Select => color range. It does a pretty good job.



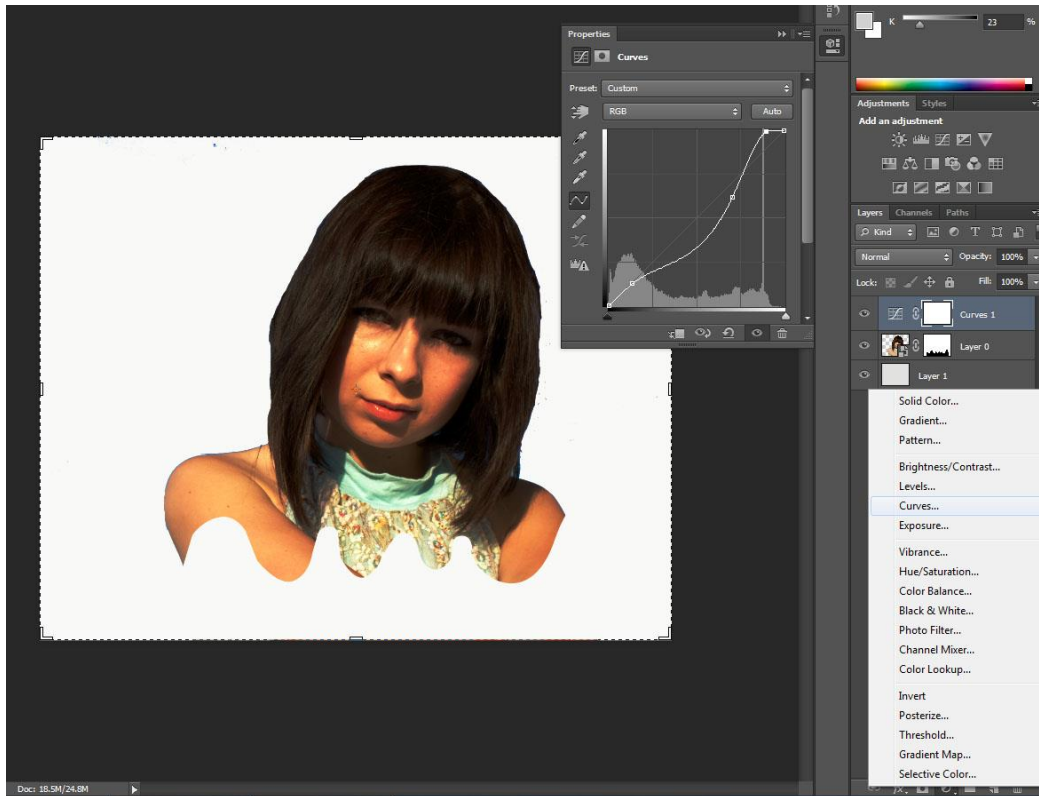
3. Right click on image and click Convert to Smart Object
4. Create a layer beneath the image with an off-white background. I chose #e0e0df.



5. Use the pen tool to draw curves on the bottom portion of the image. (To make curves with a pen tool create three points, click and drag the middle one to make the curve. Repeat process except hold alt or photoshop will continue to create the same curve, we want different.)
6. Ctrl + Enter to make it into a selection.
7. Add layer mask



8. Add a Curves Adjustment Layer. It will look a little off color-wise but it will help create that retro look



9. Create new layer above model. Use the pen tool to *roughly* outline the top article of clothing. Ctrl + Enter to make it a selection and Ctrl+ Shift +I to select the inverse.

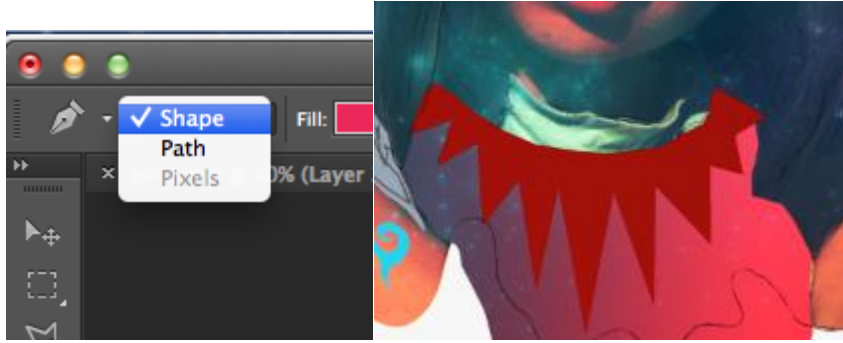
10. Then create a gradient from left to right using the colors **#613e5d** and **#ff3754**.



11. Add one strip along the side of the shirt using the pen tool. Fill it with a color of choice. I used `#b0b9c7`.

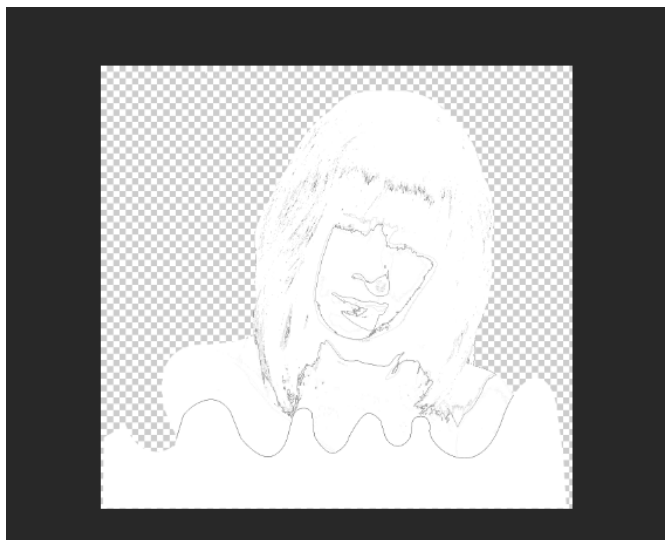


12. Use the pen tool again to create the collar. Make sure Shape is selected instead of Path. Then use the Direct Selection tool to pull down a few of those points and elongate them. (I play with different colors for the color but decide on `#e01759`.)



13. Click on the model and mask layer, copy, and create a new canvas. Paste the layer in the new document. Then go to Filter=>Stylize=>Trace&Contour.

Then add a curves layer to make the lines stand out more. Then place the trace back in.

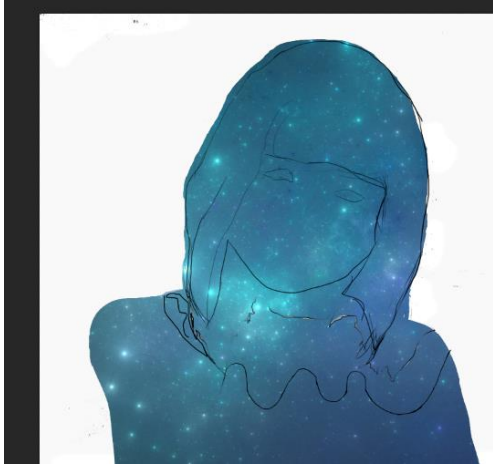


\*I also needed to use the paintbrush to

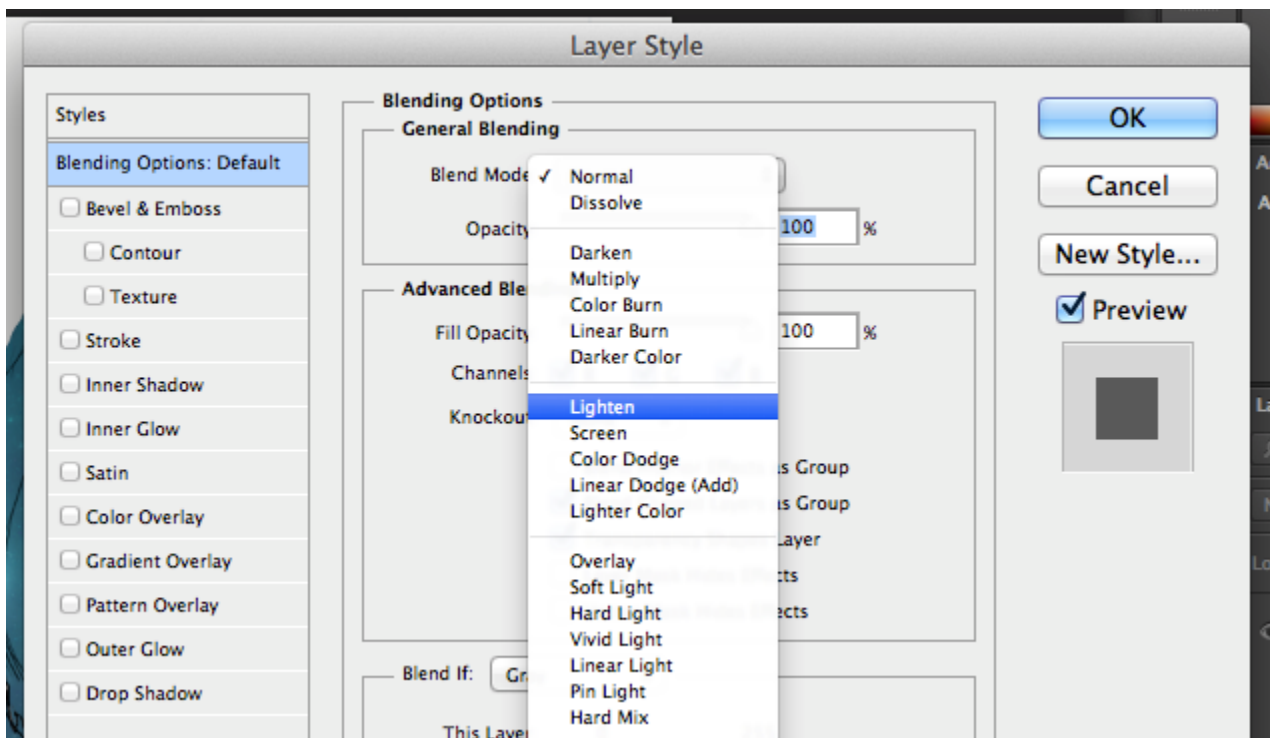
bolden lines.

14. Now take the galaxy photo <http://decoybg.deviantart.com/art/Starfield-290958488> and put it beneath your trace layer.

15. Ctrl+Click the model thumbnail so the galaxy is just on the model. Add a layer mask of the selection.

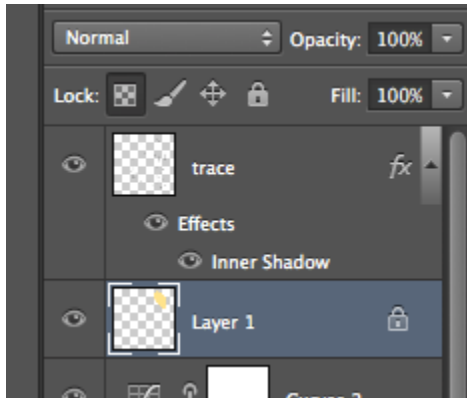


16. Add curves adjustment layer. Pull down on the mid tones values.



17. Reduce the opacity (I brought it down to 58%)

18. Make a new layer over the model and curves layers. Use the lasso tool to make an uneven circle on the head. Fill it in with the color #ffe38b. Lock the transparency.



19. Make another circle over top of it and fill it in with #ff7178.

20. Clip it to the model layer (Ctrl+Alt+G).

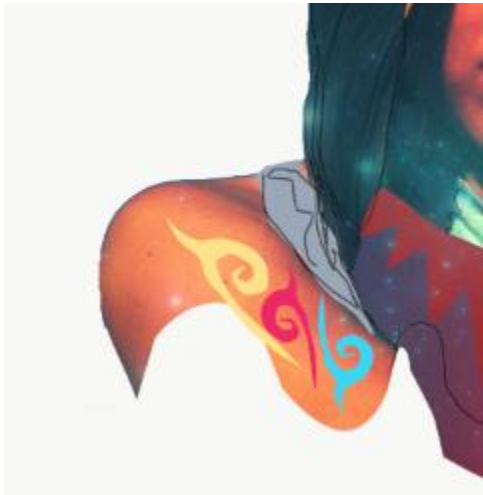
21. Make this shape using the pen tool. Fill with #ffe38b. Duplicate the shape. Lock the transparency.



Make the 2nd shape this color #f96d41. Ctrl+T and click Flip vertically.

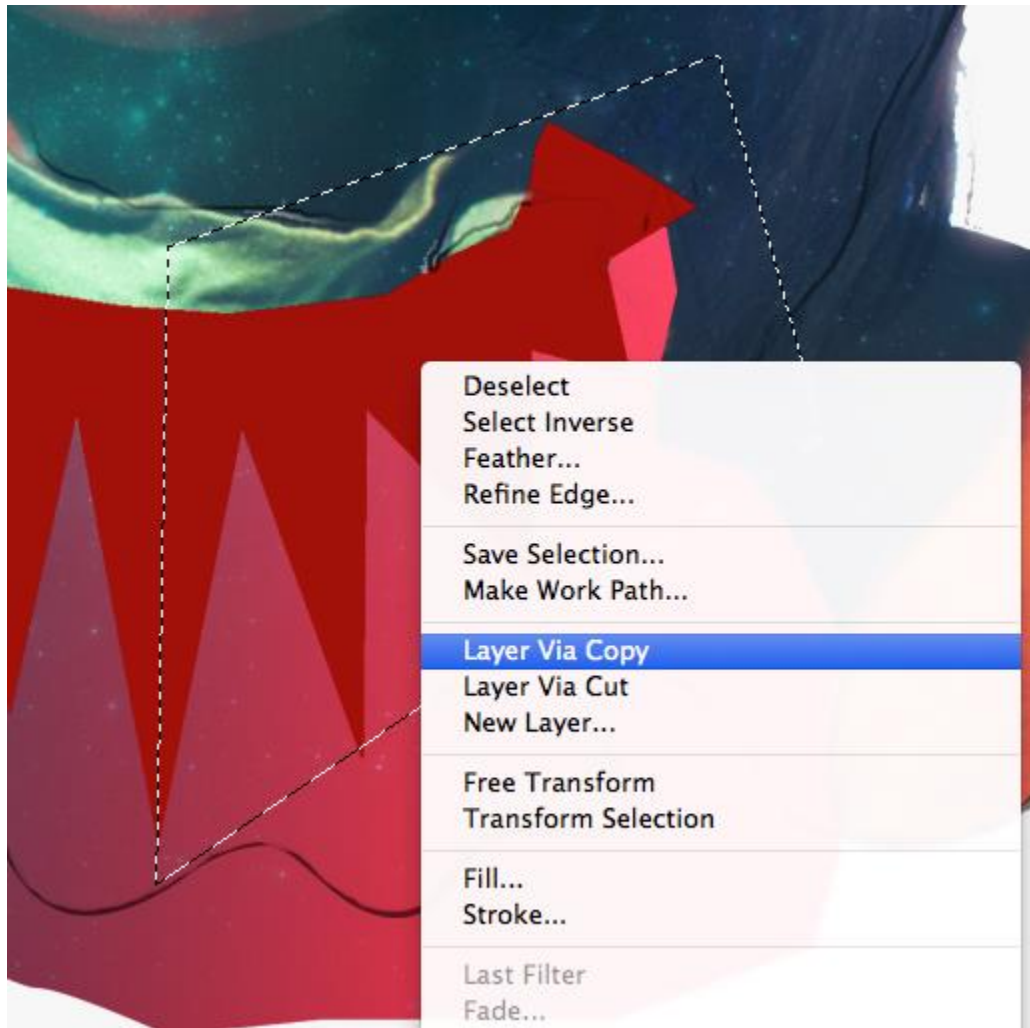


22. Make copies of these shapes and place them in different colors on the arm.



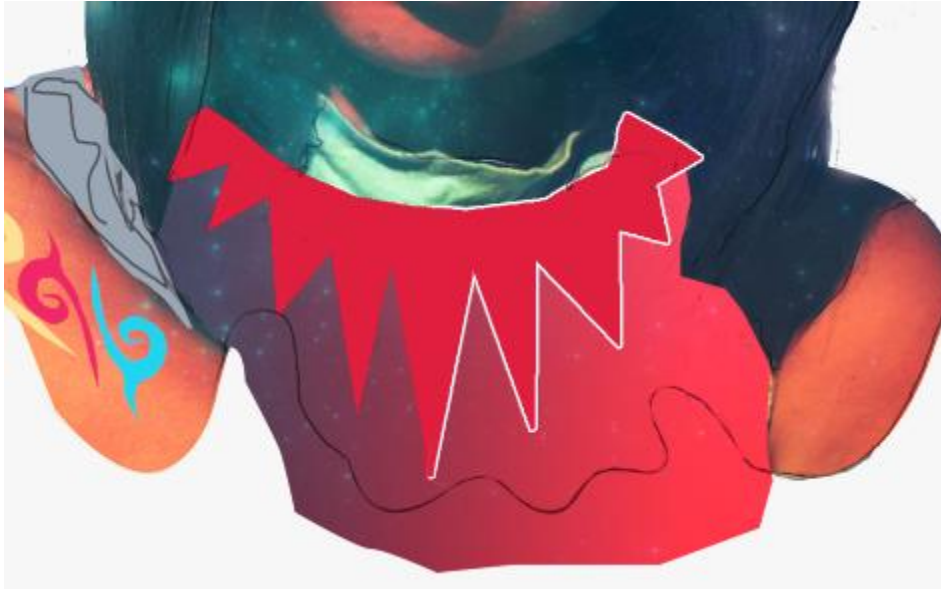


23. Return to the collar layer. Use the Polygonal Lasso Tool to select the right half of the collar. Right click on selection and Layer Via Copy.



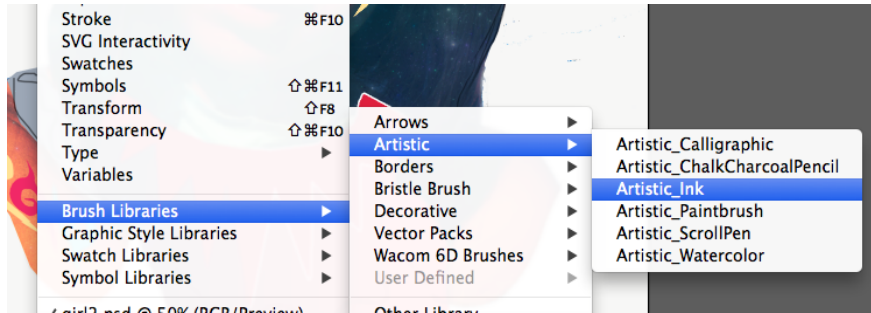
Then double click on the layer and add a thin Stroke in white.

(Create a small layer overtop the middle of the collar to hide the stroke there. ) Should look like this:



24. Next, take the image into Illustrator. Go to Window => Brush Libraries => Artistic => Artistic\_Ink. Select the brush tool from the menu at the left and use the Marker to make

the hair.



Then clip the hair in the photoshop document.

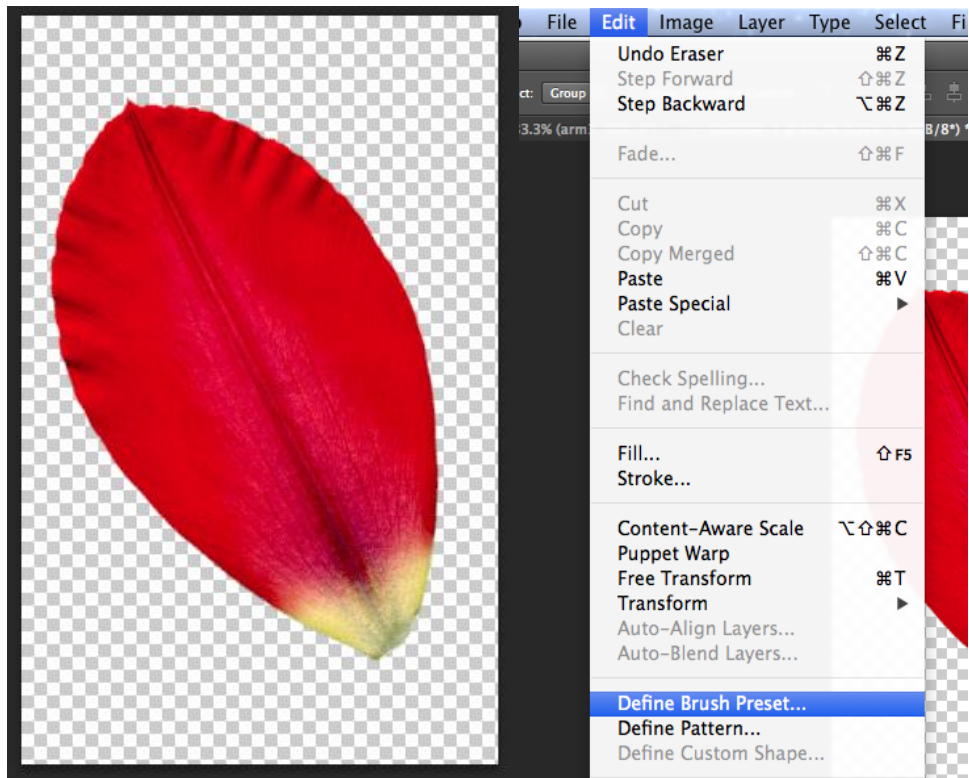


25. Add a color overlay and opacity (53%) to the hair. #377cbb. (I also took a small smudge tool to bring down the edges of her bangs.)

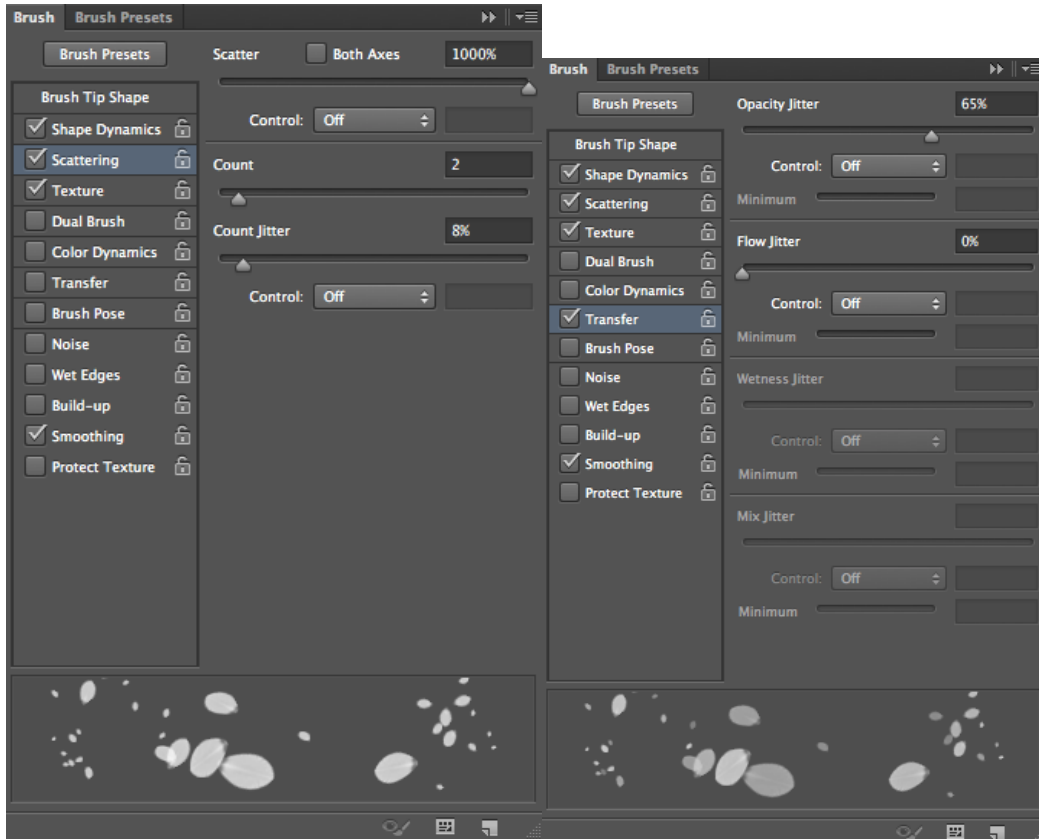
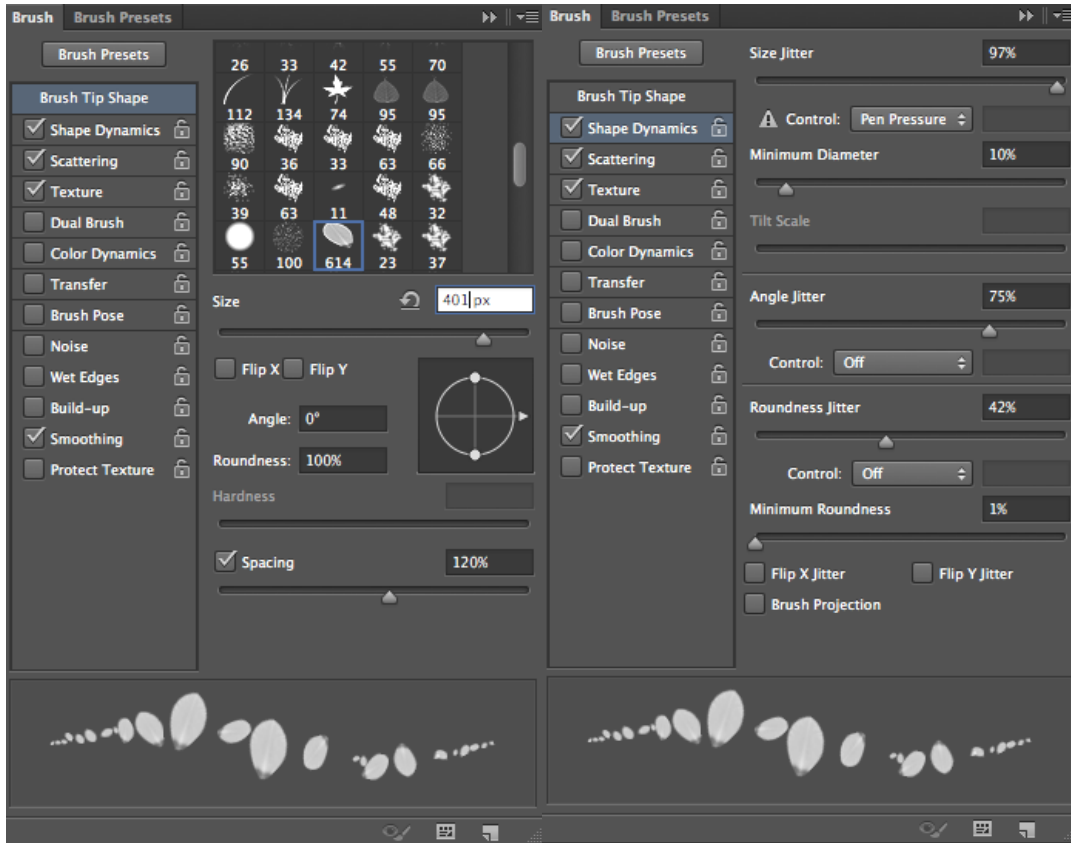
26. Head back to Illustrator and use the Rectangle Tool and Line Segment Tool to create netting. Bring into the main document and apply a yellow color overlay.



27. Now we're creating a new brush. Isolate a leaf, flower petal, or similar object. Go to Menu > Edit > Define Brush Preset

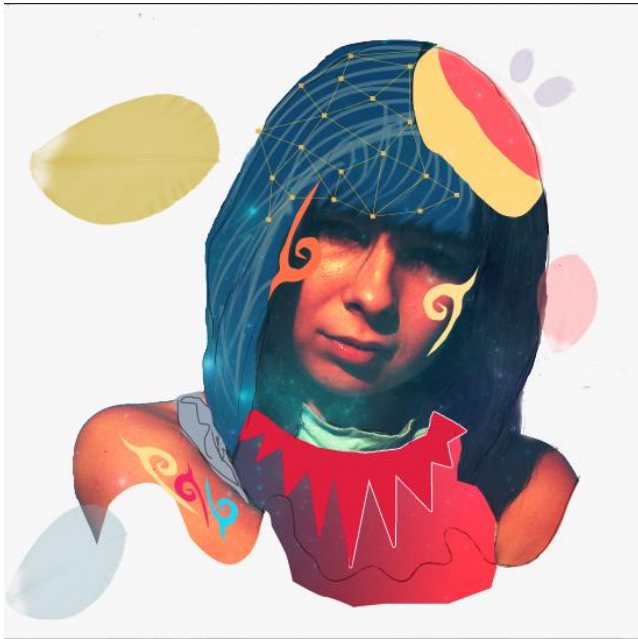


Use these settings to change the brush:



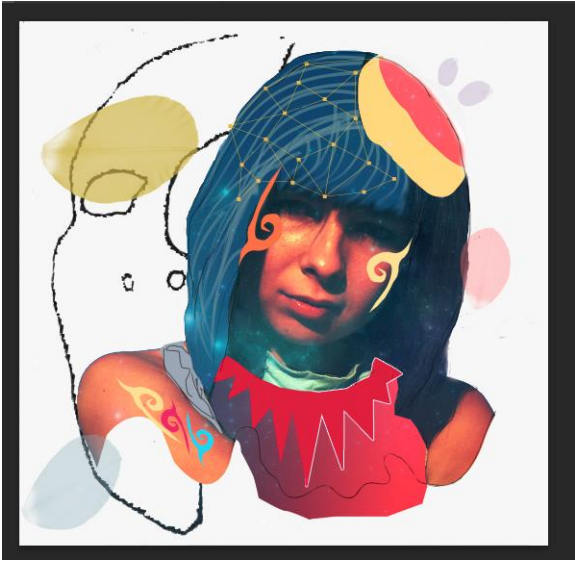
Then paint w/

diff colors.



28. Use this face and erase the background and half of the face. Then use stroke and erase the inside of the face so only the outline is left. Add a color overlay of gray and reduce opacity.







29. Add the traces ink stain overtop of the face.



31. Create a triangle using the pen tool. Add a 1 pixel stroke and reduce the fill opacity to 0 so only the stroke remains. Create a wavy layer underneath to make a fun look.



32. Make another shape the same way.



33. Go into Illustrator draw a sciggle. Use the Artist\_Ink tool over top. Apply in Photoshop and add a pink color overlay.

34. Use a thin brush to make swirls and use the smudge tool to thicken and swirl. Add a couple to the shirt.



There were two others added but I felt that it got too busy and did not add anything to this photo. So now we're finished!

